



High Pressure Oil-Flooded Rotary Screw Air Compressors

RHP Series 50-200 hp (37-160 kW),
250-450 hp (187-336 kW), 250-500 psig



Offering time-proven designs and technologies, the Ingersoll Rand RHP Series of oil-flooded rotary screw compressors ensures the highest levels of reliability, efficiency and productivity.

Enclosures Designed for Serviceability

SSR and R-Series enclosures used for the RHP air compressor cabinet design provide easy installation along with a number of important benefits:

- Powder-coated sheet metal for long life and durability
- Extensive use of sound-deadening materials for quieter operation
- Full package containment for quick installation without costly foundations or bases

Customizable Options

RHP compressors can be customized to the varying needs of your unique environments and applications, including but not limited to:

- Unenclosed units on fabricated skids or in buildings and containers
- Modifications for hazardous site conditions
- Soft starters and power outage restart

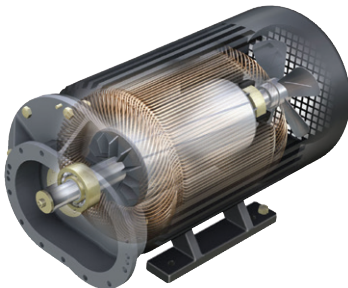


Robust and Reliable Component Design

Time-proven Airends

Used in compressors worldwide, RHP single and two-stage airends are reliable and efficient.

- Efficient, precision-matched rotors with asymmetrical helical profile
- Highest quality tapered roller bearings to handle thrust and radial loads
- Advanced lubricants for superior cooling under the rigorous stresses of high pressure conditions



Reliable Motors for Continuous Duty

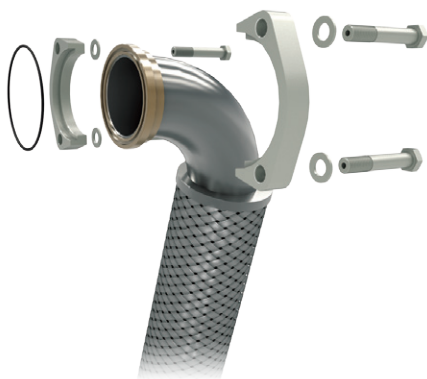
Fixed-speed RHP compressors use high-quality, efficient electric motors for the most demanding applications.

- Totally enclosed, fan-cooled TEFC motors
- Continuous duty rating with protected safety factors
- Class F Insulation, B temperature rise

Intelligent Xe-Series Controller

The Xe-Series controller features an intuitive high-resolution color display that provides a window into all vital compressor data.

- Remotely access and control compressor from almost anywhere with a standard web browser
- High-intensity LED indicators and large navigation buttons clearly show compressor status
- Real-time clock with scheduled start and stop ability
- Built-in performance analysis graphics and visual trending



Reliable Piping and Components

Based on Ingersoll Rand's V-Shield™ technology, the interconnecting piping and components are constructed to create durable, leak-free accessory assemblies.

- Stainless steel braid hoses and stainless steel control line tubing reduce contamination
- Welded air piping on high flow equipment
- Pressure-rated components to handle increased airend capabilities
- Air or water coolers with options for upgraded construction materials

RHP37-RHP160 Performance										
Model	Max. Pressure		Nominal Power		Capacity (ACFM)		Dimensions (Length x Width x Height)		Weight (Air-cooled)*	
	psig	barg	hp	kW	cfm	m ³ /min	in	mm	lb	kg
RHP37	250	17.2	50	37	116	3.3	96 x 50 x 80	2,432 x 1,265 x 2,032	3,500	1,588
	300	20.7	50	37	97	2.7	96 x 50 x 80	2,432 x 1,265 x 2,032	3,500	1,588
RHP45	250	17.2	60	45	136	3.9	96 x 50 x 80	2,432 x 1,265 x 2,032	3,800	1,724
	300	20.7	60	45	120	3.4	96 x 50 x 80	2,432 x 1,265 x 2,032	3,800	1,724
	335	23.1	60	45	106	3.0	96 x 50 x 80	2,432 x 1,265 x 2,032	3,800	1,724
RHP55	250	17.2	75	55	170	4.8	96 x 50 x 80	2,432 x 1,265 x 2,032	4,500	2,041
	300	20.7	75	55	150	4.2	96 x 50 x 80	2,432 x 1,265 x 2,032	4,500	2,041
	350	24.1	75	55	132	3.7	96 x 50 x 80	2,432 x 1,265 x 2,032	4,500	2,041
RHP75	250	17.2	100	75	233	6.6	106.4 x 57.7 x 80	2,703 x 1,466 x 2,032	5,400	2,449
	300	20.7	100	75	204	5.8	106.4 x 57.7 x 80	2,703 x 1,466 x 2,032	5,400	2,449
	350	24.1	100	75	174	4.9	106.4 x 57.7 x 80	2,703 x 1,466 x 2,032	5,400	2,449
RHP90	250	17.2	125	90	289	8.2	106.4 x 57.7 x 80	2,703 x 1,466 x 2,032	6,700	3,039
	300	20.7	125	90	256	7.2	106.4 x 57.7 x 80	2,703 x 1,466 x 2,032	6,700	3,039
	350	24.1	125	90	224	6.3	106.4 x 57.7 x 80	2,703 x 1,466 x 2,032	6,700	3,039
RHP110	250	17.2	150	110	348	9.9	112.4 x 72.3 x 80	2,855 x 1,836 x 2,032	7,500	3,402
	300	20.7	150	110	308	8.7	112.4 x 72.3 x 80	2,855 x 1,836 x 2,032	7,500	3,402
	350	24.1	150	110	271	7.7	112.4 x 72.3 x 80	2,855 x 1,836 x 2,032	7,500	3,402
RHP160	250	17.2	200	160	456	12.9	148 x 76 x 84.50	3,759 x 1,930 x 2,146	12,000	5,443
	300	20.7	200	160	401	11.4	148 x 76 x 84.50	3,759 x 1,930 x 2,146	12,000	5,443
	350	24.1	200	160	353	10.0	148 x 76 x 84.50	3,759 x 1,930 x 2,146	12,000	5,443
RHP160-2S	250	17.2	200	160	619	17.5	148 x 76 x 84.50	3,759 x 1,930 x 2,146	12,500	5,670
	300	20.7	200	160	501	14.2	148 x 76 x 84.50	3,759 x 1,930 x 2,146	12,500	5,670
	350	24.1	200	160	498	14.1	148 x 76 x 84.50	3,759 x 1,930 x 2,146	12,500	5,670
	400	27.6	200	160	495	14.0	148 x 76 x 84.50	3,759 x 1,930 x 2,146	12,500	5,670
	450	31.0	200	160	479	13.6	148 x 76 x 84.50	3,759 x 1,930 x 2,146	12,500	5,670

RHP250-RHP450 Performance										
Model	Max. Pressure		Nominal Power		Capacity (ACFM)		Dimensions (Length x Width x Height)		Weight (Air-cooled)*	
	psig	barg	hp	kW	cfm	m ³ /min	in	mm	lb	kg
RHP250	250	17.2	250	187	734	20.8	169 x 76 x 84.50	4293 x 1930 x 2146	13,300	6,033
	300	20.7	250	187	683	19.3	169 x 76 x 84.50	4293 x 1930 x 2146	13,300	6,033
	350	24.1	250	187	636	18.0	169 x 76 x 84.50	4293 x 1930 x 2146	13,300	6,033
	400	27.6	250	187	609	17.2	169 x 76 x 84.50	4293 x 1930 x 2146	13,300	6,033
	450	31.0	250	187	607	17.2	169 x 76 x 84.50	4293 x 1930 x 2146	13,300	6,033
	500	34.5	250	187	491	13.9	169 x 76 x 84.50	4293 x 1930 x 2146	13,300	6,033
RHP300	250	17.2	300	224	890	25.2	169 x 76 x 84.50	4293 x 1930 x 2146	13,300	6,033
	300	20.7	300	224	832	23.6	169 x 76 x 84.50	4293 x 1930 x 2146	13,300	6,033
	350	24.1	300	224	830	23.5	169 x 76 x 84.50	4293 x 1930 x 2146	13,300	6,033
	400	27.6	300	224	688	19.5	169 x 76 x 84.50	4293 x 1930 x 2146	13,300	6,033
	450	31.0	300	224	686	19.4	169 x 76 x 84.50	4293 x 1930 x 2146	13,300	6,033
	500	34.5	300	224	683	19.3	169 x 76 x 84.50	4293 x 1930 x 2146	13,300	6,033
RHP350	250	17.2	350	261	1,043	29.5	177 x 82 x 95.13	4,496 x 2,083 x 2,416	15,100	6,849
	300	20.7	350	261	976	27.6	177 x 82 x 95.13	4,496 x 2,083 x 2,416	15,100	6,849
	350	24.1	350	261	975	27.6	177 x 82 x 95.13	4,496 x 2,083 x 2,416	15,100	6,849
RHP400	250	17.2	400	298	1,147	32.5	177 x 82 x 95.13	4,496 x 2,083 x 2,416	15,100	6,849
	300	20.7	400	298	1,145	32.4	177 x 82 x 95.13	4,496 x 2,083 x 2,416	15,100	6,849
	350	24.1	400	298	1,039	29.4	177 x 82 x 95.13	4,496 x 2,083 x 2,416	15,100	6,849
	400	27.6	400	298	942	26.7	177 x 82 x 95.13	4,496 x 2,083 x 2,416	15,100	6,849
RHP450	250	17.2	450	336	1,185	33.6	177 x 82 x 95.13	4,496 x 2,083 x 2,416	15,100	6,849
	300	20.7	450	336	1,182	33.5	177 x 82 x 95.13	4,496 x 2,083 x 2,416	15,100	6,849
	350	24.1	450	336	1,181	33.4	177 x 82 x 95.13	4,496 x 2,083 x 2,416	15,100	6,849
	450	31.0	450	336	935	26.5	177 x 82 x 95.13	4,496 x 2,083 x 2,416	15,100	6,849
	500	34.5	450	336	935	26.5	177 x 82 x 95.13	4,496 x 2,083 x 2,416	15,100	6,849

*Weights provided are estimates only.

Standard Features					
Category	Description	RHP37-RHP160	RHP250-RHP450		
Airend	Proven single and two-stage airends	●	●		
Cooling Systems	Sequential air and oil coolers	●	●		
	Moisture separator	●	●		
	Stainless steel condensate drain	●	●		
Filtration & Separation	High dust inlet filter	●	●		
	Pressure-rated components	●	●		
	Swing-out lid on separator tank	●			
Interconnecting Piping	Stainless steel braid air and oil hoses	●	●		
	Stainless steel control air tubing	●	●		
	Simple ducting (single air inlet and single outlet)	●	●		
Auxilliary Systems	Packaged in low-sound R55-160 enclosure	●			
	Packaged in low-sound SSR enclosure		●		
	Package pre-filtration	●			
	Flow control by full load/no load & inlet modulation	●	●		
Motors and Electrical	Control panel protection, NEMA 4	●	●		
	TEFC drive and fan motors	●	●		
	Star-delta reduced voltage starter	●	●		
General Options	High dust package pre-filtration	○			
	Low ambient modification	○	○		
	Outdoor modification	○	○		
	Water-cooled air and oil coolers	○	○		
	Upgraded cooler materials of construction	○	○		
	Heresite-coated air coolers	○	○		
	Power outage restart option	○	○		
	Soft starter	○	○		
Xe-Series Controllers		XE-90M		XE-145M	
Description	RHP37-RHP160	RHP37-RHP160	RHP250-RHP450	RHP37-RHP160	RHP250-RHP450
On controller graphing and trending		○	●		
Standard web pages	●	○	●		
Remote control via web pages	●	○	●		
Automated reporting		○	●		
Web-based graphing and trending		○	●		
E-mail notification of warning and trips		○	●		
Built-in sequencer for up to 4 units	●	○	●		
Direct communication with XI system controls	●	○	●		



ingersollrandproducts.com

Ingersoll Rand (NYSE:IR) advances the quality of life by creating comfortable, sustainable and efficient environments. Our people and our family of brands—including Club Car®, Ingersoll Rand®, Thermo King® and Trane® —work together to enhance the quality and comfort of air in homes and buildings; transport and protect food and perishables; and increase industrial productivity and efficiency. We are a \$13 billion global business committed to a world of sustainable progress and enduring results.



Ingersoll Rand, IR, the IR logo and V-Shield are trademarks of Ingersoll Rand, its subsidiaries and/or affiliates. All other trademarks are the property of their respective owners. Ingersoll Rand compressors are not designed, intended or approved for breathing air applications. Ingersoll Rand does not approve specialized equipment for breathing air applications and assumes no responsibility or liability for compressors used for breathing air service. Ingersoll Rand assumes no responsibility or liability for compressors used in any application other than compressed air. Nothing contained on these pages is intended to extend any warranty or representation, expressed or implied, regarding the product described herein. Any such warranties or other terms and conditions of sale of products shall be in accordance with Ingersoll Rand's standard terms and conditions of sale for such products, which are available upon request. Product improvement is a continuing goal at Ingersoll Rand. Designs, available functions and specifications are subject to change without notice or obligation.